

XBIS - PS8065C IS INTENDED FOR VISUAL INSPECTION OF VARIOUS OBJECTS (BIG SIZE LUGGAGES AND PARCELS). AN IDEAL SOLUTION FOR HOTELS, WAREHOUSES, RAILWAYS, ARMY UNITS, HOSPITALS, HOSTELS N MORE...



This is cost-effective and cutting-edge solution for the inspection of large size baggages, or suitcases. Its large tunnel size makes it an ideal solution for industries where big parcels needs to be scanned. It maintains mobility,

This X-Ray inspection system can be distinguished for its high throughput, flexibility, reasonable price and quick image evaluation. It meets the requirements of airports, hotels, warehouses, supply chain industry, business centers, prisons and border crossings.

## **XBIS - PS8065C** Dual Energy

### APPLICATION AREAS



AIRPORTS



CUSTOMS



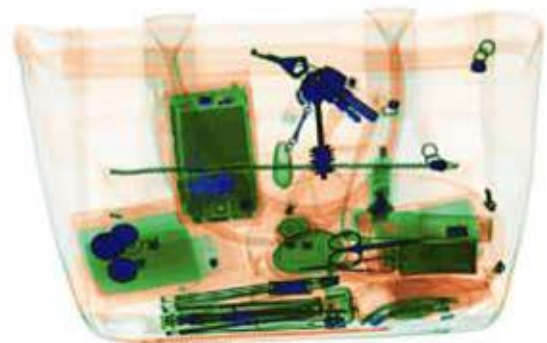
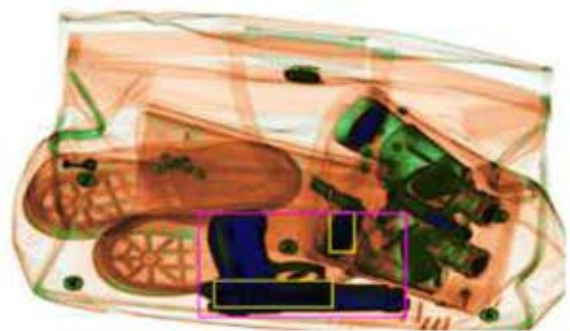
LOGISTICS CENTERS



WAREHOUSES



SEA PORTS



**Pentagon Engineers | New Delhi | Gujarat | Goa**

Ph : 011-41063680 | 9818821303 | 9818521303 | [info@pentagonengineers.com](mailto:info@pentagonengineers.com)

[www.pentagonengineers.com](http://www.pentagonengineers.com) | [www.baggage-scanner-on-rent.com](http://www.baggage-scanner-on-rent.com)

## TECHNICAL SPECIFICATIONS

Tunnel Size	800 (W) X 650 (H) mm
Power Requirement	220V AC ( $\pm 10\%$ ) 50 $\pm 3$ Hz
Power Consumption	1.0KW (Max)
Noise Level	<58dB
Conveyor Speed	0.22m/s
Conveyor Max Load	200 kgs
Wire Resolution	32AWG
Spatial Resolution	1.0mm Horizontal and Vertical
Steel Penetration	34mm
Single Inspection Dosage	< 1.5 $\mu$ Gy
Leakage Radiation	<0.1 $\mu$ Gy/h
Film Safety	Guarantee ISO 1600 Film

## PARAMETERS

Image Display	19" High Resolution LCD Monitor
Display Resolution	1280*1024 ; 24 bit/pixel Color
Contrast Sensitivity	24 Visible Levels, 4096 Gray Level
Image Storage	10,000 pictures in real time
Zoom	16 Times Enlarge
Multi-Energy Color Material Identification	Organic objects in orange color, Inorganic objects in blue color & Mixture in green color
Edge Enhancement	Object contour edge is more distinct
High Penetration Display	Increase the contrast of bright area in image to make the area that is easy to penetrate appear more clearly
Low Penetration Display	Increase the contrast of bright area in image to make the area that is difficult to penetrate appear more clearly
Brightening / Dimming	Increase/Decrease image brightness
Image Recurrence	Display the previous twenty images and process any one of them



## X-RAY GENERATOR SPECIFICATIONS

Anode Voltage	140kv
Tube Current	0.3mA
Cooling	Sealed oil bath with forced air
Duty Cycle	Rated for 100% Duty Cycle
Beam Direction	Downward
Beam Angle	80°
Detector	L - shaped Array

## OPERATING ENVIRONMENT SPECIFICATIONS

Operating Temp./Humidity	0°C ~ 45°C/20% ~ 95% (Non - condensing)
Storage Temp./Humidity	-20°C ~ 60°C/20% ~ 95% (Non - condensing)

## SPECIAL FEATURES

Network Interface	Capable of connecting LAN, and support multi-terminal check for baggage at same time
Safety Ray	Ray is transmitted under automatic control, avoiding the error
One-key shut-down control	Just rotate the key to shut - down the machine; it is safety easy and convenient
Eagle eye	Capable of expediently observing the magnifying area
Self-diagnosis function	Give message automatically if malfunction for prompt maintenance